

# Viola

Верю я Тебе

Text, Musik: unbekannt

Bearbeitung: Daniel Sattelmaier

**♩ = 72**

4

11

[illegible]

17


The musical score for Example 6-10 consists of six measures. Measures 17 and 18 are identical, each containing a half note G<sub>2</sub>, a quarter rest, and a dotted half note A<sub>2</sub>. Measure 19 begins with a fermata over a dotted half note G<sub>2</sub>, followed by a quarter note F<sub>2</sub>, a quarter note E<sub>2</sub>, and a quarter note D<sub>2</sub>. A slur covers measures 20 and 21, which contain a dotted half note C<sub>2</sub> and a half note B<sub>1</sub> respectively. Measure 22 contains a dotted half note A<sub>1</sub>, a quarter note G<sub>1</sub>, and a quarter note F<sub>1</sub>. The piece concludes with a double bar line. Dynamics include *fz* at the start, *mf* under measure 22, and *fz* at the end.

22

[illegible]

25

25



31

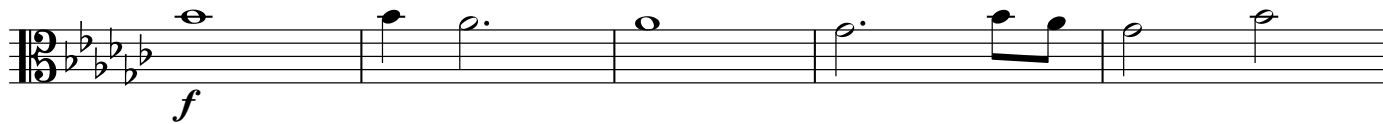
31

*f*

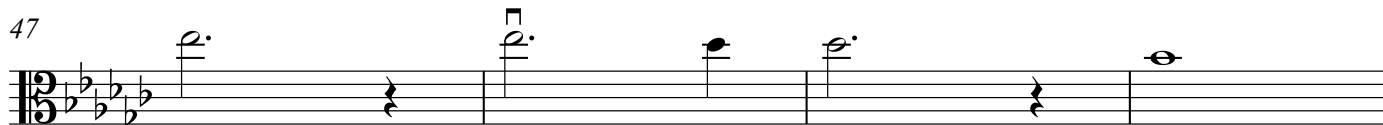
38

38



42 **a tempo**

47



51

